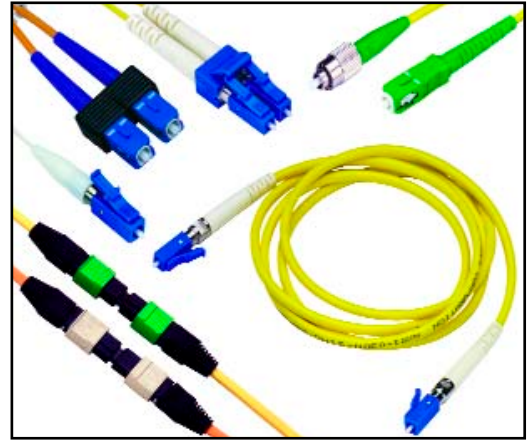


Fiber Optic Cable Assemblies

AFOP provides an extensive line of high performance fiber cable assemblies. The 750 and 752 series of assembly products offer state of the art performance with superior repeatability. All AFOP assemblies are fully intermatable with any standard coupling adapter products, and deliver high stability under a range of application conditions. The 750 series utilize only tightly toleranced preradiused Zirconia ferrule connectors to ensure consistent low loss and increased ease of use. AFOP cable assemblies are available in a wide variety of configurations with all AFOP premium connector choices. AFOP offers both multimode and single-mode grade products. AFOP cable assembly products are designed to comply with EIA/TIA 455 and 604, IEC, and Telcordia 326 standards for performance and reliability. MTP/MPO cable assemblies are standard compliant with Telcordia GR-1435.



APPLICATIONS

- Local Area Network
- Telecommunication Networks
- CATV Distribution Networks
- Point to Point Systems
- Wide Area Network

FEATURES

- Precision Preradiused Zirconia Ferrules
- Standard or Custom Configurations
- Multimode and Singlemode Options
- Low Back Reflection

SPECIFICATIONS - FIBER OPTIC CABLE ASSEMBLIES/750 SERIES

	Multimode	Singlemode
Insertion Loss	< 0.3 dB Typical 0.5 dB Maximum < 0.6 dB (MT-RJ)	< 0.2 dB Typical (PC Type) < 0.25 dB Typical (APC Type) 0.5 dB Maximum
Back Reflection	- 25 dB Typical	- 35 dB PC Polish - 45 dB Super PC - 55 dB Ultra PC - 65 dB APC
Connector Repeatability	Δ IL < 0.2 dB	Δ IL < 0.1 dB
Operating Environment	- 40°C to + 75°C	- 40°C to + 75°C
Temperature Cycling	Δ IL < 0.1 dB Δ RL < 5 dB	Δ IL < 0.1 dB Δ RL < 5 dB
Vibration Loss Change	Δ IL < 0.1 dB Δ RL < 5 dB	Δ IL < 0.1 dB Δ RL < 5 dB
Cable Retention Loss Change	Δ IL < 0.1 dB Δ RL < 5 dB	Δ IL < 0.1 dB Δ RL < 5 dB

SPECIFICATIONS - MTP/MPO CABLE ASSEMBLIES/752 SERIES

	Multimode	Singlemode
Insertion Loss	< 0.75 dB (Maximum) < 0.35 dB Average	< 0.75 dB (Maximum) < 0.35 dB Average
Back Reflection	N/A	< - 55 dB
Operating Environment	- 40°C to + 75°C	- 40°C to + 75°C

Fiber Optic Cable Assemblies

ORDERING INFORMATION - FIBER OPTIC CABLE ASSEMBLIES / 750 SERIES

<p>750 - X</p> <p style="text-align: center;">↓</p> <p>Connector End#1 Code</p> <p>B: ST Metal Body D: FC Fixed Key G: LC Duplex Slimpack J: LC/PC Duplex Connector K: LC/APC Connector L: LC/PC Connector M: MT-RJ Connector (w/o Pin)₁ N: MT-RJ Connector (w/ Pin)₁ P: FC/PC Connector Q: FC/APC Connector R: SC/PC Duplex Connector S: SC/PC Connector T: SC/APC Connector U: MU/PC Connector</p>	<p>X</p> <p style="text-align: center;">↓</p> <p>Connector End#2 Code</p> <p>Same Codes As End#1</p>	<p>NN -</p> <p style="text-align: center;">↓</p> <p>Cable Code</p> <p>01 = SM 3.0mm Jacketed 02 = SM 900µm Buffer 03 = 50/125 Simplex 3.0mm 04 = 50/125 Duplex 3.0mm Zip 05 = 100/140 Simplex 3.0mm 06 = 100/140 Duplex 3.0mm Zip 07 = 62.5/125 Simplex 3.0mm 08 = 62.5/125 Duplex 3.0mm Zip 09 = 50/125 3.0 Round Cable (MTRJ Only) 10 = 62.5/125 3.0mm Round Cable (MTRJ Only) 11 = SM Duplex 3.0mm Zip 12 = SM Duplex 1.6mm Zip 13 = 50/125 Duplex 1.6mm Zip 14 = 62.5 Duplex 1.6mm Zip 15 = SM 1.6mm Jacketed 16 = SM 2.0mm Jacketed 17 = 50/125 Simplex, 1.6 mm 18 = 62.5/125 Simplex, 1.6mm 19 = 50/125 Simplex, 2mm 20 = 62.5/125 Simplex, 2mm 23 = 50/125 Simplex 900µm Buffer 25 = 100/140 Simplex 900µm Buffer 27 = 62.5/125 Simplex 900µm Buffer 28 = SM 2.4mm Round Cable (LC Slimpack Only) 29 = 62.5/125 2.4mm Round Cable (LC Slimpack Only) 30 = 50/125 2.4mm Round Cable (LC Slimpack Only)</p>	<p>C</p> <p style="text-align: center;">↓</p> <p>Polishing Type Code</p> <p>0 = MM or SM PC S = Super PC U = Ultra PC V = GR326</p>	<p>NNNN</p> <p style="text-align: center;">↓</p> <p>Cable Length In Meter</p> <p>The last digit is decimal. All length in inch or foot must be converted into meters.</p>
--	--	---	--	---

ORDERING INFORMATION - MTP/MPO CABLE ASSEMBLIES / 752 SERIES

<p>752 - N</p> <p style="text-align: center;">↓</p> <p>Connector #1</p> <p>1: MTP Male Std. 2: MTP Female Std. 3: MTP Male Bare Ribbon 4: MTP Female Bare Ribbon 5: MTP Male Short Version 6: MTP Female Short Version 0: None</p>	<p>N</p> <p style="text-align: center;">↓</p> <p>Connector #2</p> <p>Multi fiber same as Conn. #1 Single fiber follow 750 PN</p>	<p>N</p> <p style="text-align: center;">↓</p> <p>Fiber Type</p> <p>1: SM Bare Ribbon 2: SM Jacketed 3: MM/62.5µm Bare Ribbon 4: MM/62.5µm Jacketed 5: MM/50µm Bare Ribbon 6: MM/50µm Jacketed</p>	<p>N</p> <p style="text-align: center;">↓</p> <p>Ribbon Fiber</p> <p>1: 4 Fibers 2: 8 Fibers 4: 12 Fibers</p>	<p>- N</p> <p style="text-align: center;">↓</p> <p>End Face Geometry</p> <p>V: GR326 0: Standard</p>	<p>N</p> <p style="text-align: center;">↓</p> <p>Length A</p> <p>0: Non Fan-out A: 0.5m Std. B: 1m Std. C: 1.5m Std.</p>	<p>NNN</p> <p style="text-align: center;">↓</p> <p>Length B</p> <p>MT Length Same as 750 Series</p>
---	---	--	---	---	---	---

Note:

1. Available for MM only.